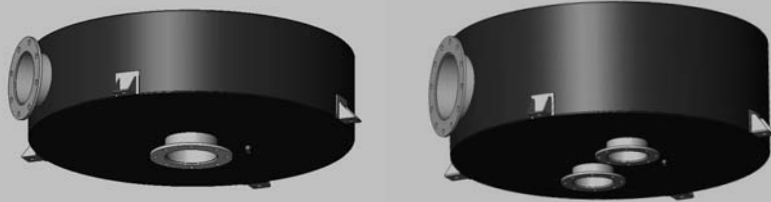


# DISK SILENCERS

**PHILLIPS & TEMRO**  
industries®

MANUFACTURER OF  SILENCERS AND ACCESSORIES

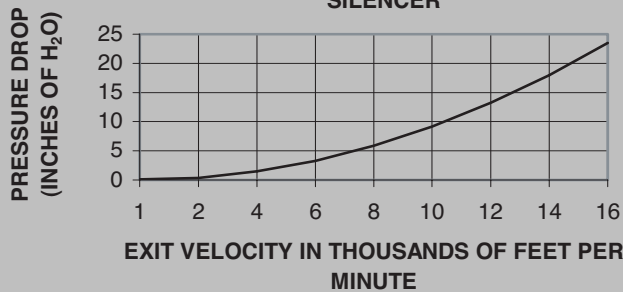


## Standard Silencer Application

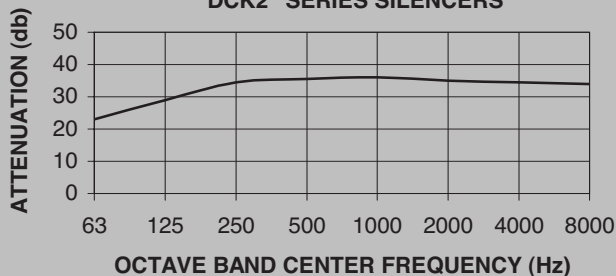
Low-profile critical grade series silencer is specifically designed for use in enclosures, trailers, marine, and other size restricted areas. Provides effective noise reduction in critical areas. Silencer is insulated to reduce external surface temperature.

**Average Attenuation 22-36 dB**

PRESSURE DROP FOR "DCK2" SERIES SILENCER



REPRESENTATIVE ATTENUATION CURVE FOR "DCK2" SERIES SILENCERS



## DCK2 SERIES: CRITICAL GRADE

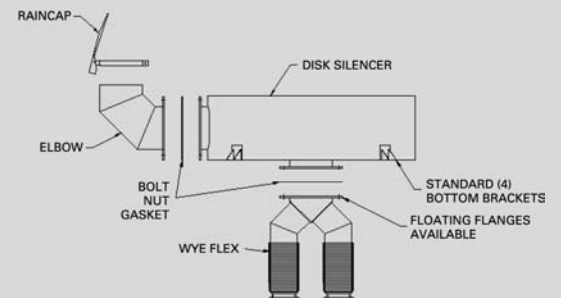
### Standard Construction Features

- Heavy-duty all-welded carbon steel construction
- High temperature (1000°F) satin black finish
- 125/150# ANSI drilled plate flanges on inlet and discharge
- Four mounting tabs
- Can be mounted in any plane
- Low profile
- Internal acoustical/thermal packing

### Optional Construction Features and Accessories

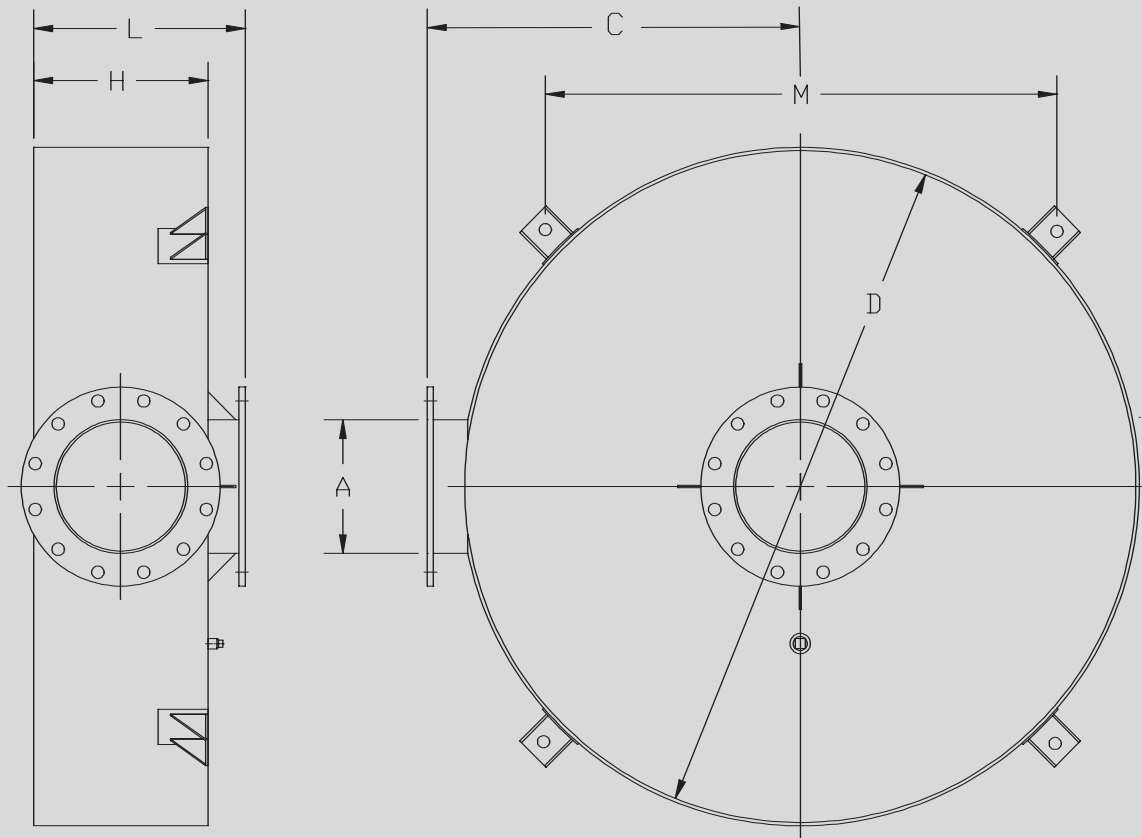
- Stainless steel construction
- Various mounting supports and legs
- Air leak tests
- Special inlet and outlet configurations
- Special inlet and outlet connection types
- Complete line of engine exhaust accessories

Disk Silencer with Single Bottom Inlet/Side Outlet Wye Option



# DISK SILENCERS

## MODEL DCK2 SERIES CRITICAL GRADE



Part Number	A	C	D	H	K	L	M	Weight
DCK2-04-200751	4	16.5	27	8	30.50	11	1.00	140
DCK2-05-200752	5	18.0	30	10	33.50	13	1.00	250
DCK2-06-200753	6	19.5	33	12	36.50	15	1.00	310
DCK2-08-200754	8	26.5	47	14	50.50	17	1.00	520
DCK2-10-200755	10	29.5	53	16	56.50	19	1.00	750
DCK2-12-200756	12	34.0	62	18	66.50	21	1.25	925
DCK2-14-200757	14	36.0	66	24	70.50	27	1.25	1090
DCK2-16-200758	16	40.0	74	26	78.50	29	1.25	1500
DCK2-18-200759	18	45.5	85	28	89.50	31	1.25	1890

- Larger sizes available upon request.

Dimensions in inches, weights in pounds. Dimensions and weights are nominal and may vary slightly with production models. Request certified drawings for exact dimensions.

\* Dimensions of DCS-14, DCS-16, and DCS-18 are based on dual inlet silencers. Dimensions will vary for single inlet silencers.

**Custom sizing available for specific applications**

**Phillips & Temro Industries, Inc.**

Silencer Division • Prior Lake MN 55372 • (952) 440-9200 • Fax: (952) 440-3400 • E-mail: sales@phillipsandtemro.com

[www.phillipsandtemro.com](http://www.phillipsandtemro.com)